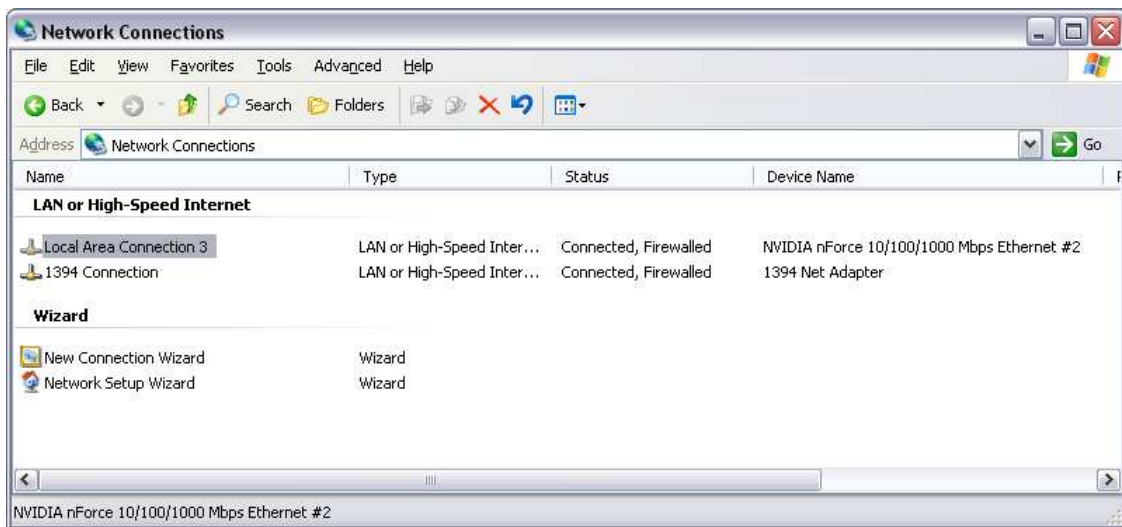
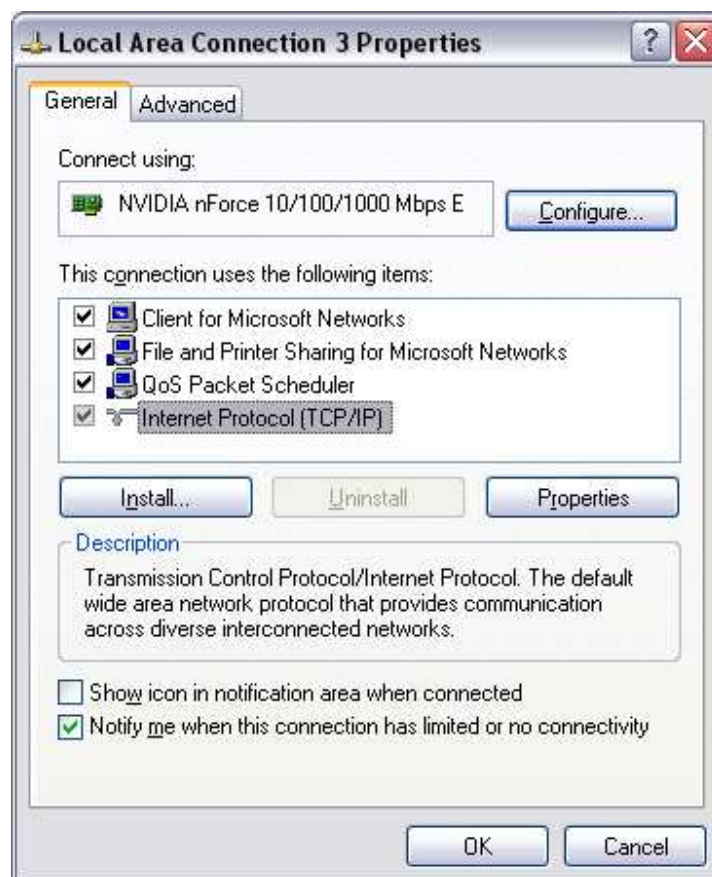


Close your web browser.

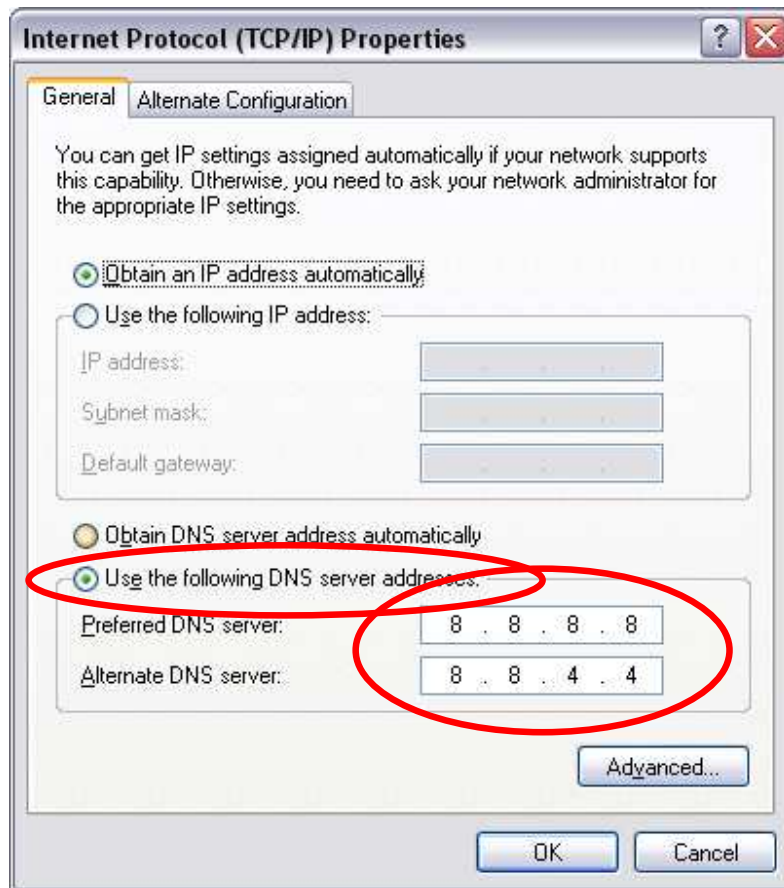
From the Windows **Control Panel**, double-click on **Network Connections**.



Right-click on your LAN adapter and choose **Properties**.



Click on Internet Protocol (TCP/IP), and then click on the Properties button



In the lower section, choose "Use the following DNS server addresses" and enter the numbers shown (for Google's public DNS name resolution service).

See: <https://developers.google.com/speed/public-dns/>

Click OK (to close Internet Protocol (TCP/IP) Properties).

Click OK (to close your LAN Properties)

Launch your browser and confirm connectivity.